

DRAWING NUMBER
57/48

DRAWING NUMBER

DRAWING NUMBER

DRAWING NUMBER

THE POLO CLUB PLAT II

PART OF THE POLO CLUB P.U.D.

SITUATE IN SECTIONS 26, 27, 34 AND 35, TOWNSHIP 46 SOUTH, RANGE 42 EAST

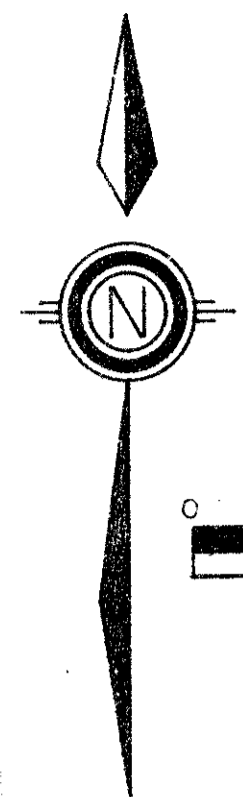
PALM BEACH COUNTY, FLORIDA

1987

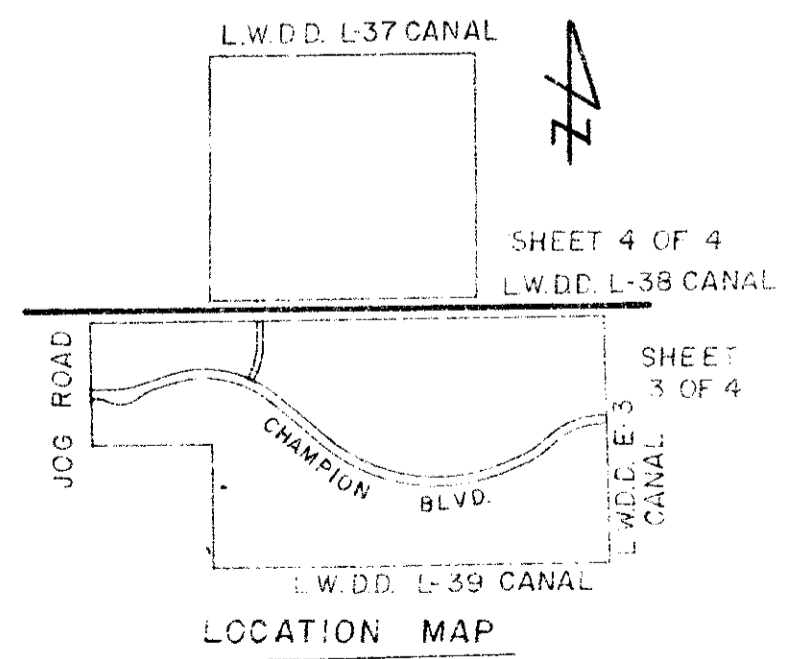
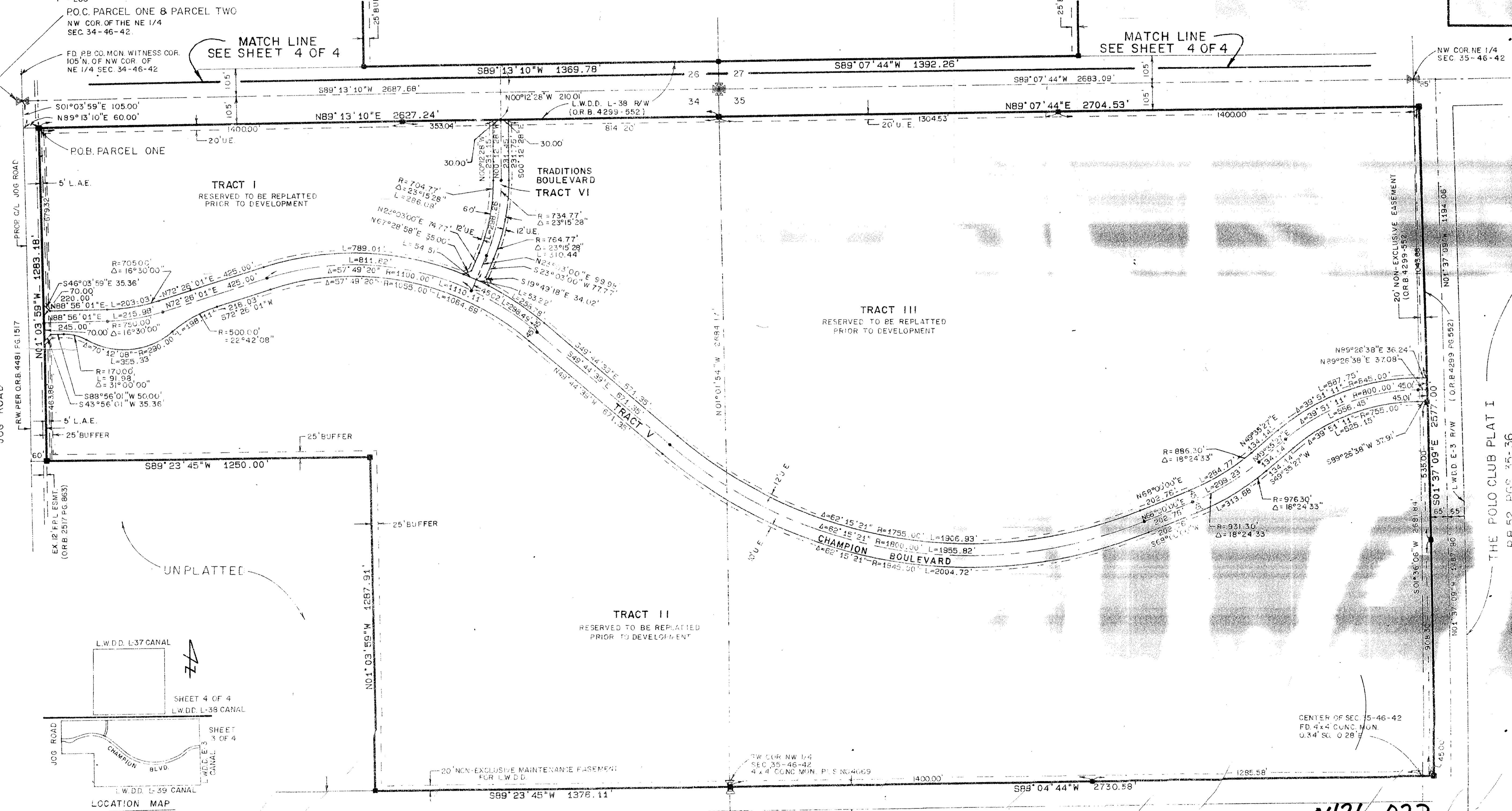
SHEET 3 OF 4

48

STATE OF FLORIDA
COUNTY OF PALM BEACH
THIS PLAT WAS FILED FOR
RECORD _____ DAY OF _____
AD, 1986 AND DULY RECORDED
IN PLAT BOOK _____ ON PAGES
_____ AND _____
JOHN B. DUNKLE, CLERK
BY: _____, D.C.



SCALE IN FEET
1" = 200'



0436-022 57/48

Meridian Surveying & Mapping Inc.
300 LOMBARD STREET
WEST PALM BEACH, FL.

DRAWN	MHC
CHECKED	MAM
DRAWING NO.	81

THE POLO CLUB PLAT I
P.B. 52 PGS. 35-36

LE LAC PUD
P.B. 39 PGS. 145-146